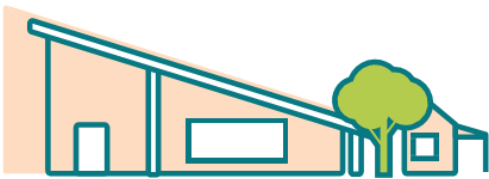


Fly high - See far



2023 annual report to the Community

# Poonindie Community Learning Centre

Poonindie Community Learning Centre number: 0351

Partnership: Port Lincoln



School principal:

Mrs Tamarin Condon

Date of endorsement:

02/04/2024



Government  
of South Australia  
Department for Education

# Context Statement

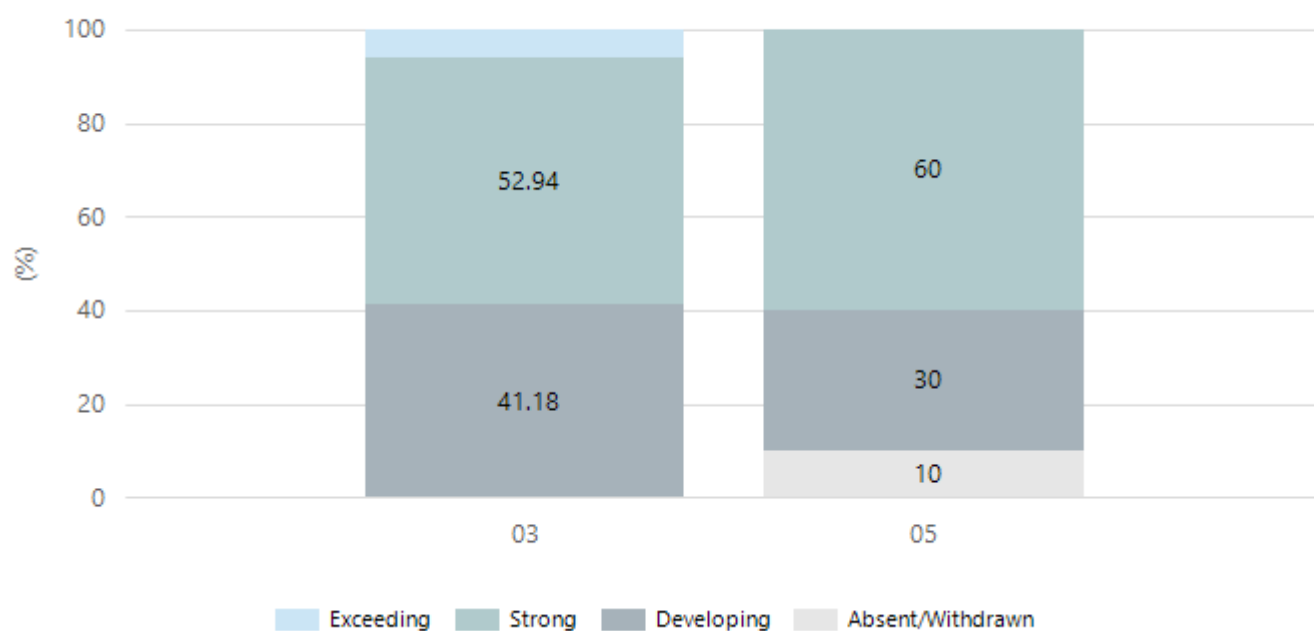
Poonindie Community Learning Centre caters for students from R-6. At the time of this report, the enrolment in 2023 is 122. Poonindie Community Learning Centre is classified as Category 4 on the Department for Education Index of Educational Disadvantage. At the time of this report, the school population includes 6% Aboriginal students, 5% students with disabilities, 4% students with English as an additional language or dialect (EALD) funded background, 2% children/young people in care. Further information about the school is available on the school's website (including its context statement), as well as the My School website.

## Performance Summary

### NAPLAN Proficiency

In 2023, the Australian Curriculum, Assessment and Reporting Authority (ACARA) - a Commonwealth Independent statutory authority - announced changes to NAPLAN performance reporting. This new way of reporting by ACARA that NAPLAN results from 2023 will not be comparable to previous years. The new approach replaces the previous numerical NAPLAN bands and the national minimum standard.

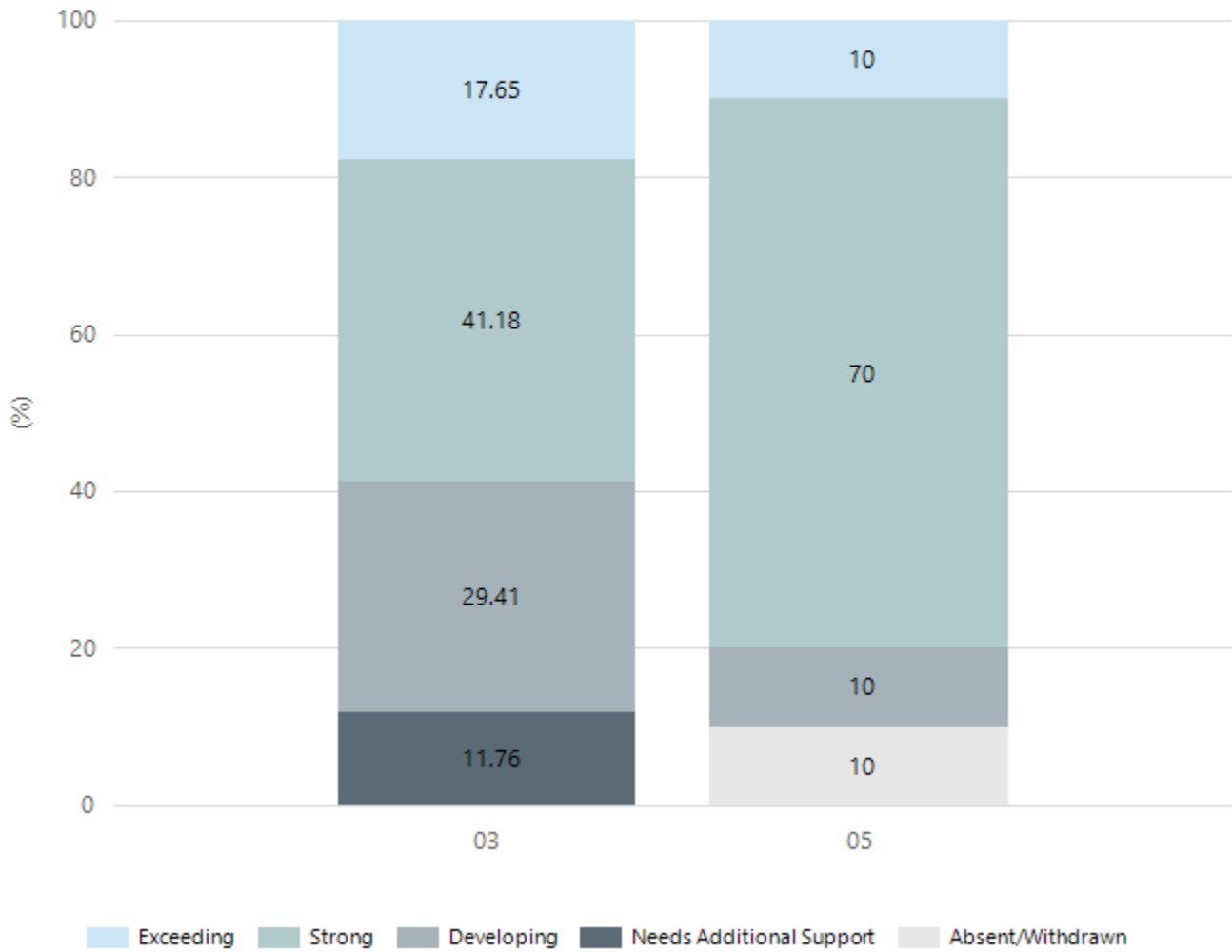
#### Numeracy



Year Level	03	05
Exceeding	1	
Strong	9	6
Developing	7	3
Absent/Withdrawn		1
Total	17	10

Data Source: Department for Education Assessment Data Holdings, 2023. When there are less than six students in a cohort, no data is supplied.

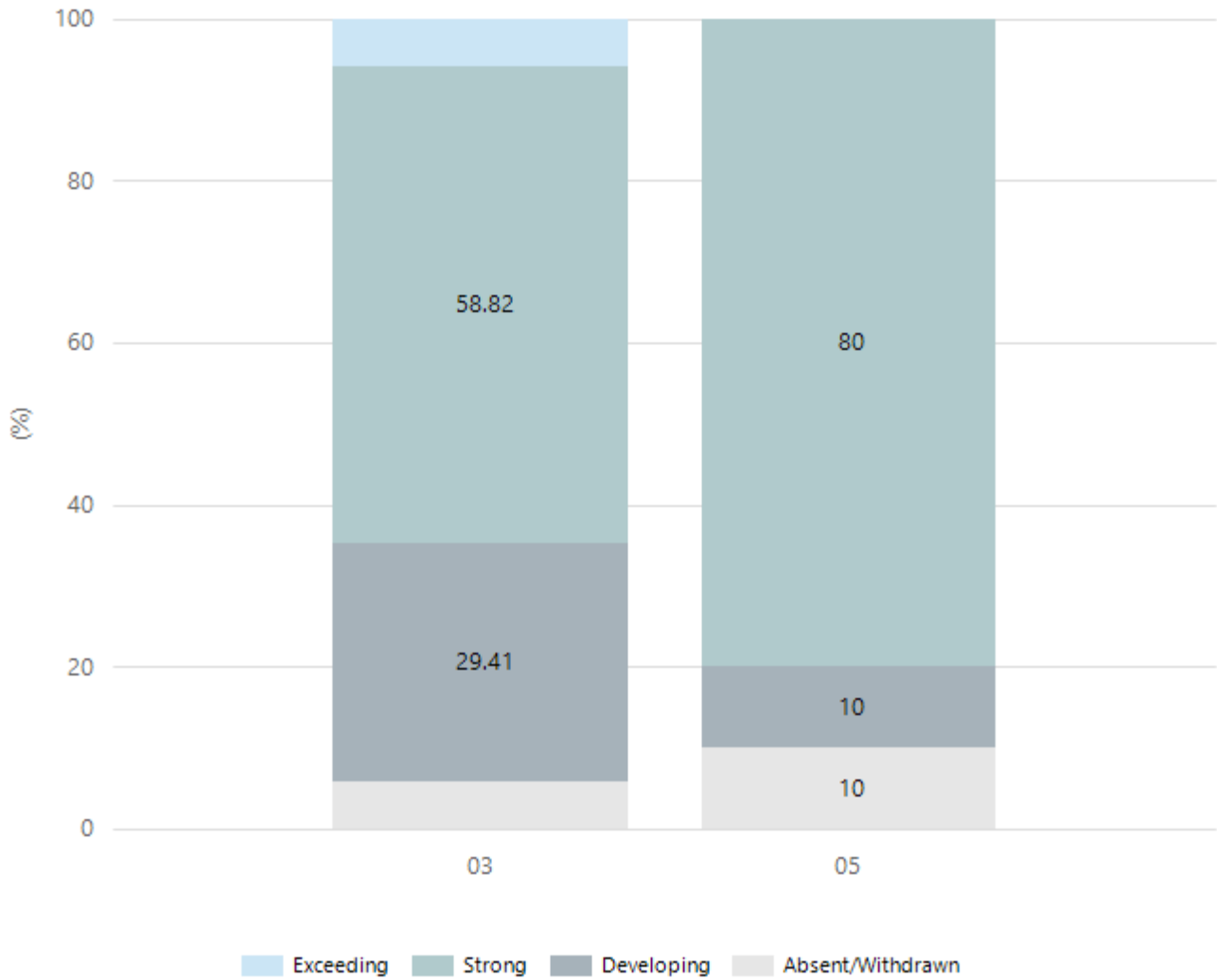
## Reading



Year Level	03	05
Exceeding	3	1
Strong	7	7
Developing	5	1
Needs Additional Support	2	
Absent/Withdrawn		1
Total	17	10

Data Source: Department for Education Assessment Data Holdings, 2023. When there are less than six students in a cohort, no data is supplied.

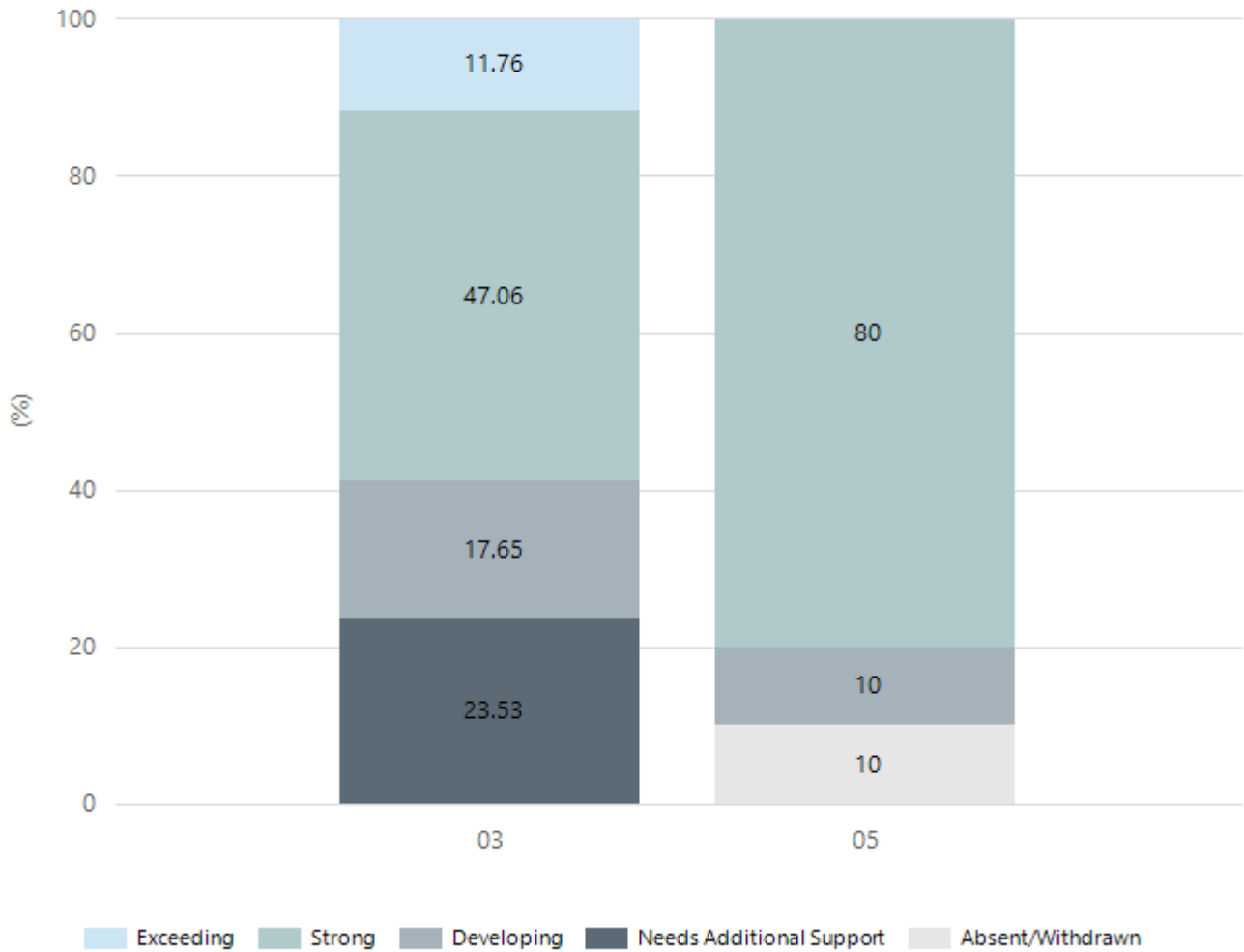
## Writing



Year Level	03	05
Exceeding	1	
Strong	10	8
Developing	5	1
Absent/Withdrawn	1	1
Total	17	10

Data Source: Department for Education Assessment Data Holdings, 2023. When there are less than six students in a cohort, no data is supplied.

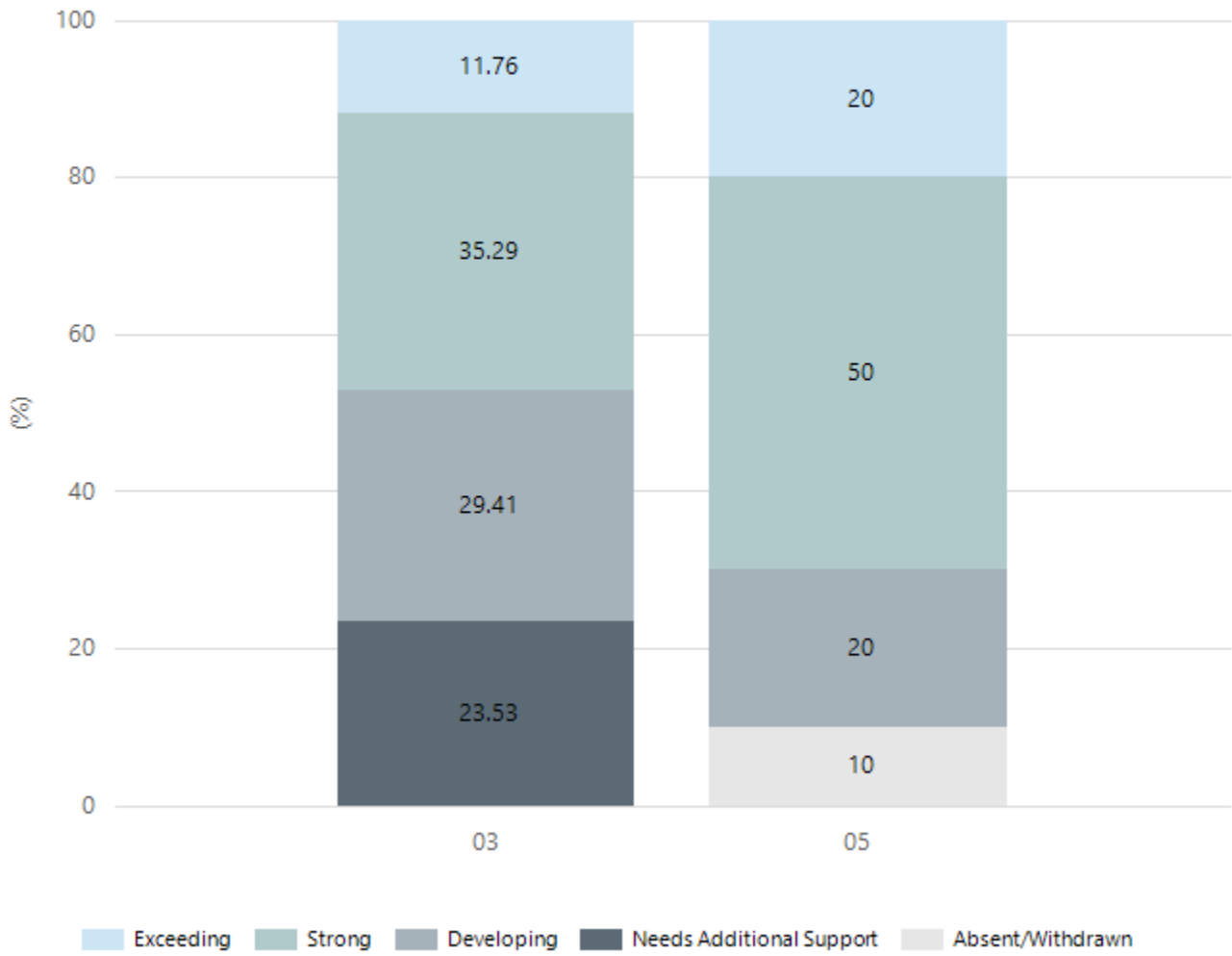
## Grammar



Year Level	03	05
Exceeding	2	
Strong	8	8
Developing	3	1
Needs Additional Support	4	
Absent/Withdrawn		1
Total	17	10

Data Source: Department for Education Assessment Data Holdings, 2023. When there are less than six students in a cohort, no data is supplied.

## Spelling



Year Level	03	05
Exceeding	2	2
Strong	6	5
Developing	5	2
Needs Additional Support	4	
Absent/Withdrawn		1
Total	17	10

Data Source: Department for Education Assessment Data Holdings, 2023. When there are less than six students in a cohort, no data is supplied.

# School Attendance

Year Level	2021	2022	2023
Reception	84.2%	82.6%	80.3%
Year 01	88.6%	85.1%	84.0%
Year 02	93.3%	79.8%	84.2%
Year 03	90.2%	87.5%	80.0%
Year 04	90.2%	82.8%	88.9%
Year 05	93.2%	85.6%	81.6%
Year 06	92.7%	87.3%	86.4%
Year 07	87.3%		
Total	90.0%	84.3%	83.6%

Data Source: Department for Education Attendance Data, Semester 1 Report 2023. A blank cell indicates there were no students enrolled. 'Primary Other' includes students enrolled in specialised education options. 'Secondary Other' includes students who have already spent a year at Year 12 and elected to undertake further study at Year 12.

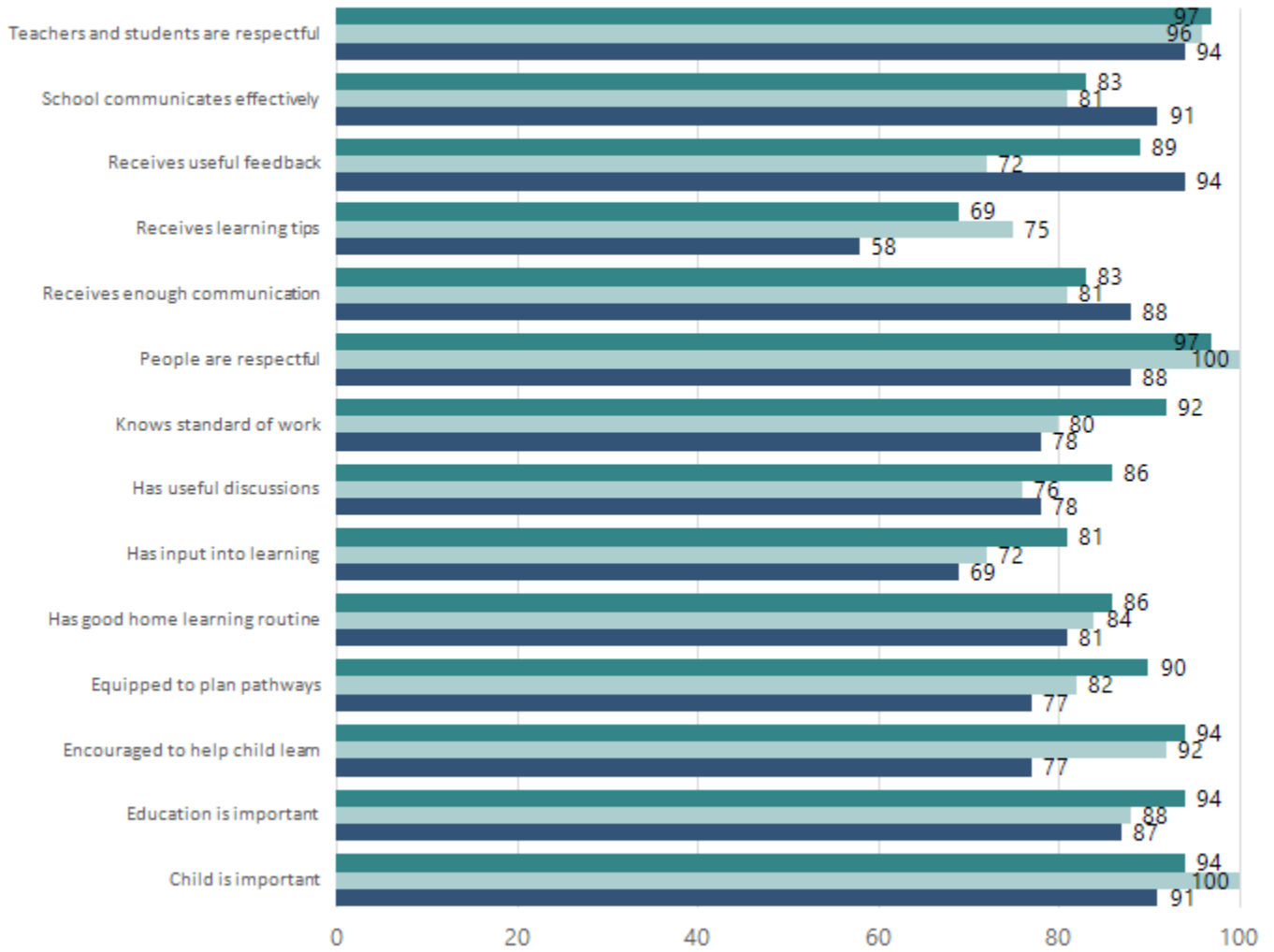
## Attendance Comment

In South Australia, all children and young people must be in school from 6 years to 16 years old. They must attend a government or non-government school full time. From age 16 to 17 however, young people must attend school or an approved learning program (such as an apprenticeship, traineeship, accredited course or university). Schools and parents must encourage and support students to come to school every day. Parents and caregivers must make sure their child is enrolled in a school, and attends school all day and everyday it is open, unless a child is sick or has an approved exemption. Teachers and leaders actively follow up when a student misses school, including recording all absences and non-attendance. All schools in South Australia have local attendance procedures governed under the Education and Children's Services Regulations 2020.

# Parent Opinion Survey Results

Proportion of agree/strongly agree response(%)

2021 2022 2023



Data Source: 2023 Department for Education Parent Opinions Survey, Term 3 2023.



## Intended Destination

Leave Reason	Number	%
QL - LEFT SA FOR QLD	1	20.0%
TG - TRANSFERRED TO SA GOVERNMENT SCHOOL	4	80.0%

Data Source: Department for Education Destination Data Report, 2023. Data extract term 3 2023. Data shows recorded destinations for students that left the school in the previous year. Data is uploaded by schools in term 3 and may not reflect final or total figures at time of report creation.

# Highest Qualifications held by the teaching workforce and workforce composition

All teachers at this school are qualified and registered with the SA Teachers Registration Board.

Qualification Level	Number of Qualifications
Bachelor's degrees or Diplomas	6
Postgraduate Qualifications	3

Data Source: Data extracted from Mandatory Workforce Information Collections as on the last pay date of June 2023. As self-reported by staff in the system.

Please note: Data includes staff who are Actively employed and on extended paid leave. Please note only the highest qualification of the Teaching staff is reported. Excludes any number of other certifications earned.

## Workforce composition including indigenous staff

	Teaching Staff		Non-Teaching Staff	
	Indigenous	Non-Indigenous	Indigenous	Non-Indigenous
Full-Time Equivalents	0.0	7.9	0.0	4.5
Persons	0.0	9.0	0.0	7.0

Data Source: Data extracted from Mandatory Workforce Information Collection as on the last pay date of June 2023.

Please note: Data includes staff who are actively employed and on extended paid leave. "Indigenous category" is self-reported by staff in the system.

## Financial Statement

Funding Source	Amount
Grants: State	\$750.00
Grants: Commonwealth	\$6,227.27
Parent Contributions	\$36,017.45
Fund Raising	\$3,954.95
Other	\$1,102.74

Data Source: School supplied data.

# Governing Council Report 2023

A special thanks to parents for encouraging your kids, preparing lunches, driving them to buses, and attending school events, including concert practices throughout this year-

We began the year (2023) with Mrs. Sally Cormack as principal,- and were glad to be mostly free from Covid restrictions and complications seen in the previous years. However, it was a bit more unknown and unsettled as Sally stepped up for a role in the Education Department's Regional Office from Term 2. However, since appointed, Clint Beard has gone above and beyond to fill all the roles, jobs, and responsibilities that a principal is called to do. We wish Clint the best of luck in his new role, I believe that Clint will be a great asset to Lake Wangary school.

2023 has seen a growing school, which is a credit to the staff and leadership. However, credit to the many parents who work hard to bring their kids to Poonindie. This demonstrates the care our parents have for their kids/students. We have a high number of kids coming from Port Lincoln and its surroundings. (Not to take away from the families living in Poonindie at all - that's just good planning ☐.)

## Governing Council

Thanks to all those parents who have volunteered for the Governing Council, asked questions, fulfilled roles, and fearlessly advocated for our school. Our members being Wes, Kingsley, Ian, Sarah, Kylie, Kim, Jake, Hayley, Jess, Kayley, and myself. We even had two births on the Governing Council during the year - a crazy commitment for the families involved. I'm not sure if we can repeat that in 2024, but you never know. There will be opportunities to be involved in Governing Council in 2024, including as part of our new grants subcommittee. Thanks to all parents who have volunteered for different roles over the year, and I'd like to see more opportunities for service both in our classrooms, grounds, and beyond.

Special thanks to Helen Schramm, PCW - chaplain, who supports students, staff, and families through numerous ups and downs, including the breakfast program and numerous craft activities. Helen also attends all the Governing Council meetings; I certainly appreciate your perspective. Thanks, Helen.

## Challenges and Opportunities for the Coming Years

### Growing Pains

As our numbers have gently risen, we are facing a few challenges—issues with toilets, classrooms, parking, assembly facilities, and even appropriate transportation options. These are not the worst problems to have—they are signs of growth. However, they are problems. Parking has been a serious challenge; the Governing Council has been wrestling with solutions for the last 18 months, including engaging a traffic consultant and connecting with the Lower Eyre Council (who are recognising it as a problem as well) .

While we have had engagement with the Education Department on this, there has been a reluctance for them to realise that this is a serious problem that is not going away. We have put in, even while Sally Cormack was with us, some application for support with this, and we had hoped, when our new fence was put up, that it would facilitated a bigger discussion about current and future needs at the school. For all the parents that have been frustrated at the parking and traffic issues at the school in 2023, the governing council, have been working hard in 2023, and we just wish we had more to show for our discussions, letter writing, and discussions with relevant parties.

We want to see movement on things like irrigation systems and assembly venues. We are looking forward to working with the new leadership team of Tamarin Condon, supported by Kim Francis and the rest of the staff.

To quote Helen Keller: "Alone, we can do so little; together, we can do so much."

Joshua Telfer

Poonindie Community Learning Centre, Governing Council Chair, 2023